



CENTRAL SCHOOL PROJECT PRESS

Winter 2011

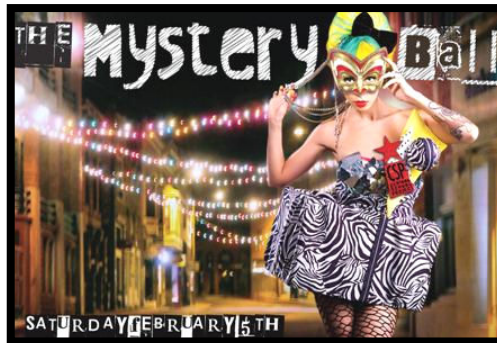
Volume 3, Issue 1

Inside this issue:

<u>Bunny Magic II</u>	<u>2</u>
<u>New Years Concert</u>	<u>2</u>
<u>Inherit the Wind</u>	<u>2</u>
<u>CSP Calendar</u>	<u>3</u>
<u>Int'l Film Series</u>	<u>3</u>
<u>Friends Feast</u>	<u>3</u>
<u>Members' Corner</u>	<u>3</u>
<u>Featured CSP Artist</u>	<u>4</u>

Feb. 5 Mystery Costume Ball to Benefit Bisbee's Center for the Arts

Disguise yourself for a night of masked elegance at the 2nd Annual CSP Mystery Costume Ball Fundraiser on Saturday, February 5 from 7:30-11:00 p.m. Enjoy delicious hors d'oeuvres and drinks while experiencing art installations, performance, music and Tucson DJ Carl Hanni. Express yourself with your own costume creation, whether it be Pop, Venetian, Futurist, Victorian, or Dada.



ing will be altered into an enchanting art environment. Instead of a traditional gallery exhibition, attendees will encounter installations of sound, video, light and assemblage throughout the building's unique architecture.

Get dressed up for Bisbee's most mysterious masquerade and have a fabulous evening while supporting Bisbee's center for the arts! Tickets are \$10

or \$8 for Friends of Central School, and can be purchased at Atlanta's Music & Books, High Desert Market, Mimosa Market, or at the door.

Explore the historic Central School as transformed by the imagination of over 20 regional artists. All three floors of the build-

Visiting Artist YaYa Chou Creates Bisbee-Inspired Installation

On January 22 from 4-6 pm, CSP is hosting a reception to celebrate *The Next Open Door*, an installation created by visiting artist YaYa Chou. During her residency at CSP, Los Angeles-based artist and animator Chou has developed a site-specific installation inspired by her impressions of the Lavender Pit copper mine and its place in Bisbee's history and culture.



Visiting Artist YaYa Chou

YaYa views the Pit largely as an inspirational symbol - a link between Bisbee's past glories and its current charms. In this engineered landscape, Chou sees evidence of past accomplishment as well as hope for the future. Peering into the Pit, the artist sees the land transformed into architecture. It is a coliseum in which we may project our own hopes and visions, and a metaphor for the diverse populations that have left their mark on the area.

In *The Next Open Door*, Chou has created a sculptural space that reflects her experience of Bisbee's landmark feature. She has created a public space where the possibility for a new direction emerges. **Viewers are invited to interact with the installation and leave their own mark on the space by bringing a small object which represents why they love Bisbee.** This might be a menu from their favorite restaurant, a small rock, a picture, or a found object, or participants can write or draw directly on the sculpture. *The Next Open Door* will be exhibited January 23 - 30, Friday, Saturday and Sunday, 11 am to 4 pm.

CSP's Visiting Artist Program is made possible by support from the Bisbee Foundation and Freeport-McMoRan Copper and Gold Foundation.

200 Works by 11 Artists Displayed in *Bunny Magic II*

While developing the *Bunny Magic II* exhibition through CSP's Visiting Artist Program, artist and curator Noah Saterstrom gained much insight about the creative mind. To construct this unique exhibition, Saterstrom visited the studios of Gretchen Baer, Ted Breault, Ed Briggs, Poe Dismuke, Marcia Gibbons, Jen Harris, Mike Jay, Laurie McKenna, Jan Searle, Bridget Shanahan, and Sam Woolcott, and collected their drawings and creative experiments. He felt privileged to have the opportunity to visit their studios and view the creative

process through their work. The show included 200 works which were exhibited anonymously in four large grids. While at CSP, Saterstrom also held a Text/Image Collaboration Workshop with Kristen Nelson, Director of Casa Libre en la Solana. The artwork created through the workshop group collaborations was displayed during the exhibition.

Thanks to the Freeport-McMoRan Copper and Gold Foundation and Bisbee Foundation for their support of this program.



Saterstrom cropping the work to 8" x 8"; Saterstrom hanging *Bunny Magic II*; *Bunny Magic II* opening

Fabulous Festivities Brought in the New Year at CSP

The crowd gathered at CSP started the new year off with a bang, thanks to bands The Mission Creeps and Ensphere, and dance troupes Wyld Vybe Belly Dance of Bisbee and Wyld Fyre Belly Dance of Phoenix. The night began with the lantern parade which traveled up and down Main Street and made some exciting stops featuring art, dancing, live music, some clowning around,



and a dance party. The parade then wound its way up to CSP for a concert, multiple dance performances, and the new year's count down. Throughout the chilly night, there was plenty of entertainment, costumes and hot cocoa going round. Thanks to all the entertainment, event organizers, and volunteers who participated in the event. Happy 2011 to all!

BOP takes on the Scopes Monkey Trial in *Inherit the Wind*

A cast of 30 of Bisbee's finest actors, directed by Rae Jones, will present *Inherit the Wind* by Jerome Lawrence and Robert Edwin Lee. This intense courtroom drama captures the emotion-packed division between fundamentalist religious believers, bent on keeping the teachings of evolutionary biology out of the classroom, and civil libertarians pressing to retain free speech and fighting to keep censorship out of education. These courtroom scenes were torn from the headlines long before *Law & Order* was cool. The Director



hopes playgoers of all beliefs will come away from the theater with considerable food for thought after seeing this outstanding drama.

Catch Bisbee's Obscure Production's *Inherit the Wind* at 7:30 pm on January 21, 22, 28, & 29, or at 3:00 pm on January 23 and 30. Tickets are \$12 at the door or \$10 in advance at Atalanta's Music & Books, Bisbee Visitor Center, Bisbee Food Co-op or by mail from BOP (PO Box 277, Bisbee, AZ 85603).

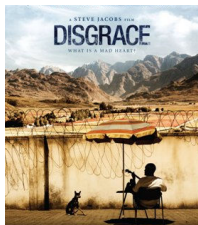
Upcoming CSP Events

Friday 1/14	Animation Basics Workshop with YaYa Chou	1:00-4:00 p.m.
Friday 1/14	International Film Series Screening of <i>Disgrace</i>	7:00 p.m.
Fri. & Sat. 1/21, 22, 28, 29	Bisbee's Obscure Productions Presents <i>Inherit the Wind</i> *	7:30 p.m.
Saturday 1/22	Reception for Visiting Artist YaYa Chou's <i>The Next Open Door</i>	4:00-6:00 p.m.
Sunday 1/23 & 30	Bisbee's Obscure Productions Presents <i>Inherit the Wind</i> *	3:00 p.m.
Saturday 2/5	Second Annual Mystery Costume Ball*	7:30 p.m.
Friday 2/25	International Film Series Screening of <i>The Owl and the Sparrow</i>	7:00 p.m.
Fri & -Sat. 3/11-12	Bisbee's Obscure Productions' Women's Review* (also Sun. 3/13 at 3 p.m.)	7:30 p.m.
Friday 3/25	International Film Series Screening of <i>Chronicle of an Escape</i>	7:00 p.m.
Saturday 3/26	MAKE: Youth Arts Festival	tba

*Admission fee requested

Watch John Malkovich's Powerful Performance in *Disgrace* on January 14

On Friday, January 14 at 7 p.m., *Disgrace* will be shown as part of the International Film Series. In a landmark performance, Oscar nominee John Malkovich stars as Professor David Lurie, whose world is shattered when he is fired for seducing a college student. He finds peace at his estranged daughter's modest farm in South Africa until a horrific incident of terror and violence forces Lurie to confront his

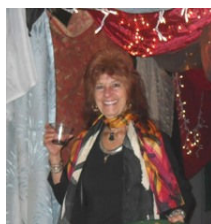


beliefs and the disturbing racial complexities of the new South Africa. *Disgrace* (2008) is a screen adaptation of J. M. Coetzee's Booker Prize-winning novel of the same name. Rated R; 118 minutes.

The International Film Series is sponsored by Cochise College in partnership with CSP.

Passage to India Friends Feast a Success

CSP Members and over 70 Friends of Central School enjoyed a fabulous celebration dinner in December. The dinner was our thank you to those who have become Friends of Central School, by donating goods, services, or funds. Without this support, CSP could not continue to preserve the historic Central School and foster arts in the Bisbee



community. The evening included an aromatic Indian feast, assorted desserts, and presentations by director Melissa Holden and historic preservation architect Bob Vint.

Thanks to all our Friends; we are truly grateful for all of your enthusiastic support.

CSP Members' Corner

Our Members have been busy these past few months. Michael Cadieux released a beautiful website of his work designed by Member Laurie McKenna <http://mcadieux.com/>. Pete Goldlust has an installation entitled "The Ceramic Jungle" in a Scottsdale storefront (located at 5th and Marshall) as part of Scottsdale Public Art's INFLUX program.

Seven of Michael Gregory's poems are featured in the latest issue of The Blue Guitar Magazine www.theblueguitarmagazine.org. Total Mobile Home, a microCINEMA theatre created by Member David Sherman and Rebecca Barten, was featured in the Berkeley Art Museum exhibition *Radical Light: Alternative Film and Video in the San Francisco Bay Area*.



a place for the arts

43 Howell Avenue • PO Drawer H
Bisbee, Arizona 85603
520.432.4866

www.centralschoolproject.org

Central School Project is a non-profit arts and cultural center founded in 1985 with the three-fold mission of providing affordable creative space to working artists, preserving and adapting the historic Central School building as a cultural center, and fostering appreciation of the arts in the Bisbee community.

Are you looking to rent a space for your next meeting, workshop, performance or event? CSP has a variety of spaces at affordable prices. Our 80-seat theater, gallery space, multi-use room, hallways and parking spaces are available to groups and individuals.

Now is the perfect time to join the Friends of Central School and help us continue the cause of creativity. Visit our newly updated website at www.centralschoolproject.org to help today.

For more information, contact Melissa Holden at melissa@centralschoolproject.org, (520) 432-4866 or PO Drawer H, Bisbee, Arizona 85603.



Top: Searle

Bottom: *Lily, Pearl, and a Fish*
Pastel, 10" x 8"



Featured CSP Artist — Jan Searle

Painter Jan Searle joined CSP in 2010. While she has lived in Bisbee for 8 years, she has also lived on a remote island off the coast of Maine, in the Caribbean, and in a small English village.

Within a year of graduating from art school, Searle landed a two year job as an artist in residence. Although it was a low paying project where no real significant public works were produced, she formed lasting relationships with musicians, writers and other visual artists. Searle feels that if she were not thrust into that creative environment with serious working artists, she may not have continued to paint.

Searle describes herself as “a painter of the mundane, an observer of nature and light, and a recorder of the beauty that one witnesses in every day life.” Her figurative work comes from an extended fascination with old family snapshots. This focus extends to images of unknown people from various sources that she feels transcend time and place, and are universal and mysterious. Inspiration for much of her recent work stems from Searle’s job as a fire lookout in the Chiricahua



Bail Bonds II, Oil, 24" x 18"

Mountains. She will be featured in the exhibition *Bisbee 2011* showing at the Tang Gallery, January 15 through February 21. Visit www.searlegallery.com, to view more of Jan’s work.